

SACRED GEOMETRY AND ARCHITECTURE



Written, edited and illustrated by
Carlos Arturo Alvarez Ponce De León

Illustrations and photos of projects and studies by
Carlos Arturo Alvarez Ponce De León
Ninón Fregoso Fregoso
Michael Rice
Jenniffer Hassey
John Stuart Reid
Dan Winter
Juan Schlosser

8

THE 5 ELEMENTS IN BIO-ARCHITECTURE BY JUAN SCHLOSSER

8.1- Earth: geomancy, grounding, fractal bioactive materials, agriculture

Earth = The practice of “earthing” has been shown to have dramatic effects on health, which emphasizes the importance of our connection to the natural elements.

Our modern world practices have severed the essential connection to the earth element as it relates to agriculture and have disconnected conventional buildings from the earth’s energy.

Food in most homes doesn’t grow in the immediate environment, therefore not only is it devoid of life force due to modern non-organic, toxic agricultural methods, but it also lacks the local environmental biome, which is essential to the ecosystem that connects plants, animals and humans.

The bio-architecture of the new earth paradigm will connect to the local environment in life-positive ways, promoting and maintaining the health of all beings while also supporting balance within the micro environment itself.

Geomancy, geomagnetic survey:

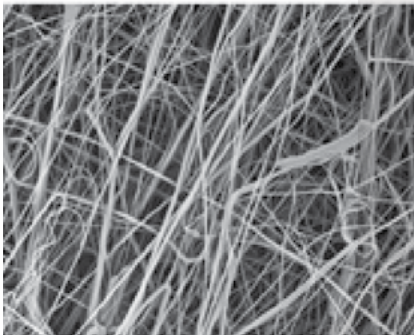
Architecture will only integrate energetically with its surrounding environment when it accounts for the subtle energies emitting from the earth.

Geomancy literally means, “Divining the Earth”. It is the art of harmonizing with the subtle earth energies that flow throughout the landscape.

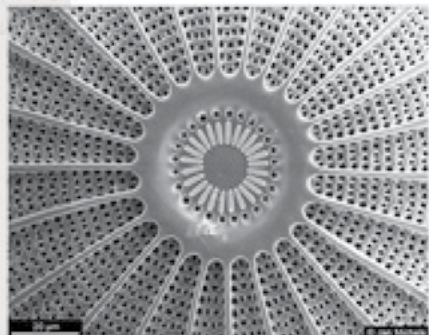
The naturally occurring energy grids of our living sentient earth are affected by many influences: electricity, magnetism, the time day or night, light, color, heat, sound, matter, and consciousness. The planetary energy grid operates through certain geometrical patterns. The grids meet at various intersecting points forming a kind of matrix. They are called, Ley lines or also known in ancient traditions as 'song lines' or 'dreaming track'. This energetic grid and the intersecting nodes are equivalent to the Meridians and acupressure points on our bodies, performing a similar function to this energy channels, these grid points are generally found at the places of strongest power on the planet.

In order to locate energetic lines and beneficial, or detrimental energy vortices on the land, specially designed pendulums or other forms of dowsing can be used. These measurements can be confirmed by geomagnetic surveys using additional specialize instruments.

This information can serve to inform the creative process as to optimize the particular location in such a way that will enhance the arrangement of particular architectural features. Thus utilizing power spots to decide parameters of landscaping design, particular location of permaculture gardens, compost piles, waterways, paths, etc. All can be designed to create a coherent relationship, where all these different features will be harmoniously located for synergistic interactions with the earth's energies.



Melt Blown Polypropylene plastic



Phytoplankton algae